



# The Willowglen Elevation A

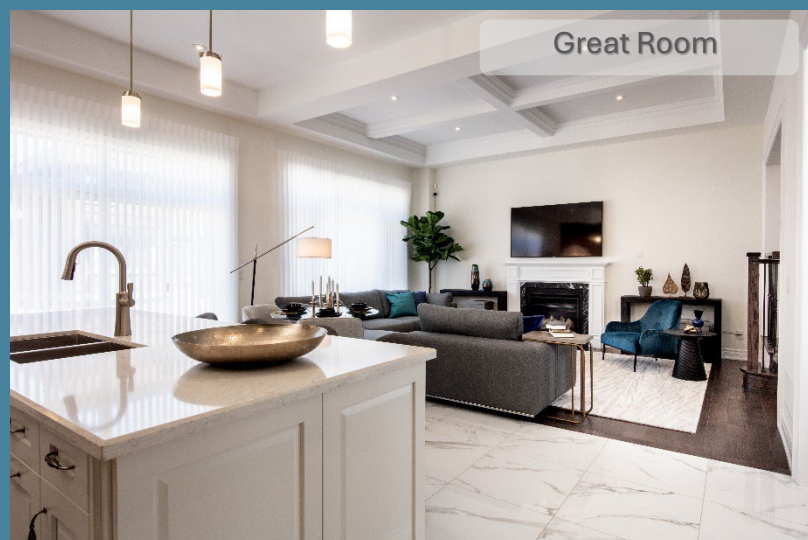
Lot 93

3,618 sq. ft.  
(Including 843 sq. ft. of Finished Lower Level)

18 Brabin Circle

Designer Selected  
Finishes

\$ 1,845,900



Great Room



Kitchen

- 5 Bedrooms + 4 ½ Bathrooms
- Elegant window coverings and designer light fixtures
- Extra Large Kitchen Island
- Gas Fireplace in Great Room
- Finished Lower Level
  - Recreation Room
  - Bedroom
  - 3-piece Bathroom
  - 9' ceiling\*
- April 2025 closing

More luxury features

Sales Office

647-287-7042

Whitby@heathwood.com

HEATHWOOD





Dining Room



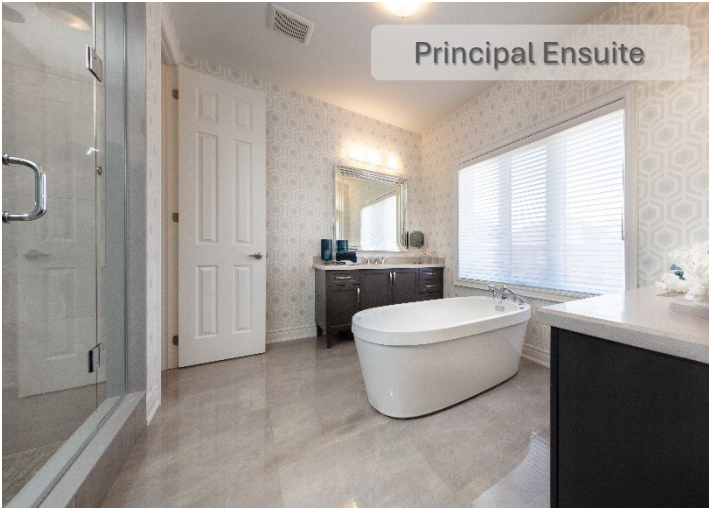
Lower Level Rec Room

## Key Highlights

- ❖ Designer selected paint and wallpaper throughout
- ❖ 10’ and 11’ ceilings on the Main Level \*
- ❖ 9’ ceilings on the Second Level \*
- ❖ 10’ Tray ceiling in Principal Suite
- ❖ 5” engineered hardwood on Main Level, Second Level hallway and Principal Suite\*\*
- ❖ Oak stairs with metal pickets
- ❖ Waffle ceiling detail in Great Room
- ❖ Coffered ceiling detail in Dining Room and Foyer
- ❖ Smooth ceiling throughout
- ❖ Direct Access to Garage from Mudroom
- ❖ Second Level Laundry Room with upper cabinets
- ❖ 8’ safe and sound interior doors throughout the first two Levels and 6’8” safe and sound doors on the Lower Level
- ❖ Upgrade Moen faucets throughout

## Bathroom

- Frameless Glass shower in Principal Ensuite
- Freestanding bathtub in Principal Ensuite
- His and her vanities in Principal Ensuite
- Upgraded Caesarstone counters
- Luxury Ceramics / Porcelain tiles



Principal Ensuite

## Kitchen

- Built-in Kitchen Aid Appliances
- Upgraded Kitchen Cabinets
  - Elegant Stacked Cabinetry
  - Pot drawers
  - Crown molding
  - Valance lighting
  - Soft close cabinets and drawers
- Kitchen Backsplash
- Servery with sink, upper cabinets, and 24” deep pantry with pull out drawers

## Electrical

- Pot lights throughout
- Keyless Entry
- Doorbell Camera
- Central Vacuum System
- Exterior pot lights
- Garage door openers
- 200 AMP service



Principal Suite

HEATHWOOD

\*Except where beams and heating equipment are required. \*\*As Per Plan.  
Prices and specifications are subject to change without notice. E. & O.E.  
February 2025