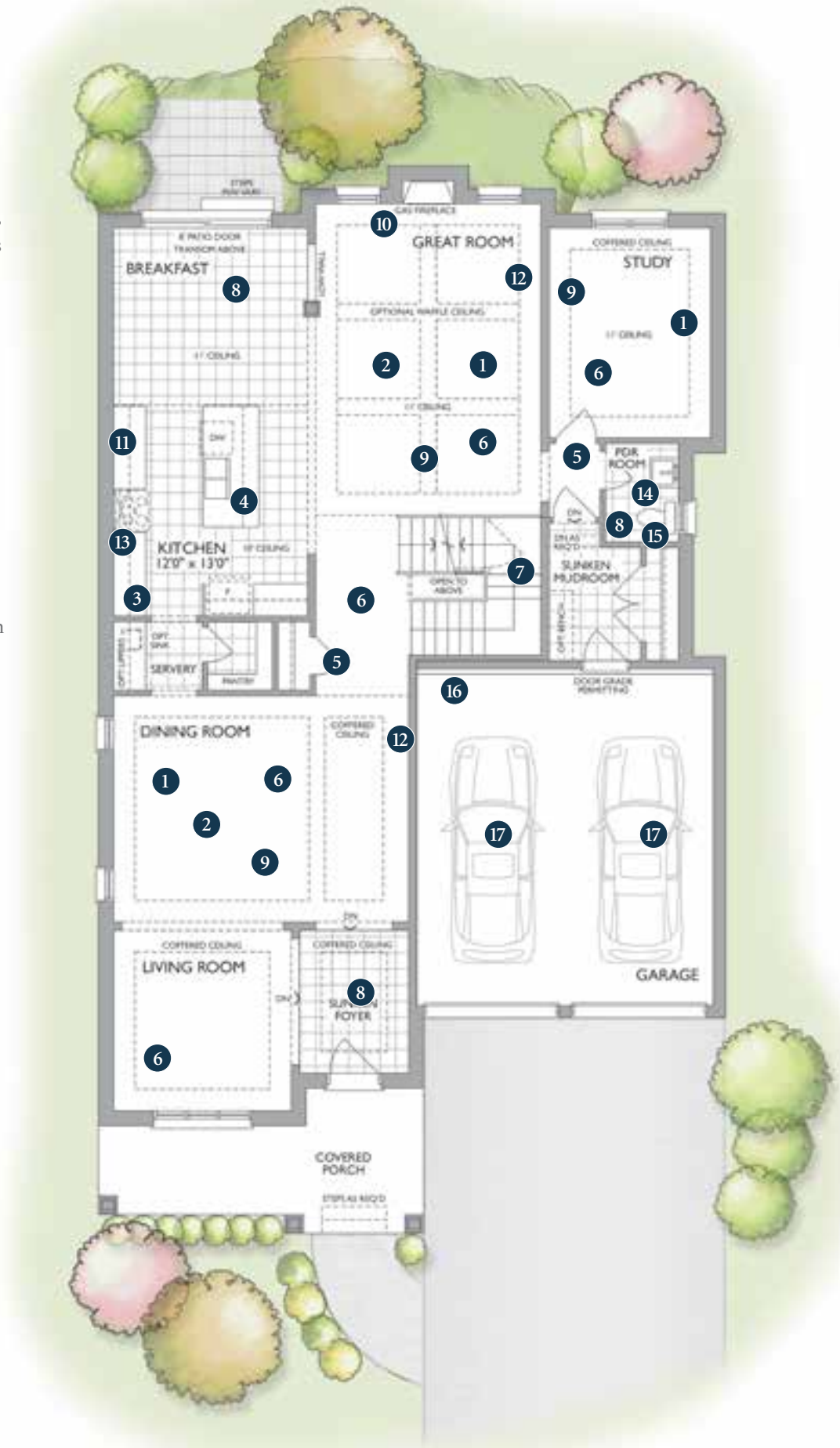


The Classic Collection

MAIN FLOOR ATTRIBUTES

- 1 10' - 11' Ceilings (as per plan)
- 2 Smooth ceilings throughout main floor
- 3 Upgraded custom designed kitchen cabinetry with extra height uppers and crown moulding. Includes top drawers, deep upper over fridge and soft closing doors and drawers
- 4 Luxurious granite countertops with 1 1/2" built up square edge and undermount stainless steel sink with upgraded faucet
- 5 8' "Safe and Sound" interior doors
- 6 5" Handscraped "Vintage" engineered Oak flooring throughout main floor (except tiled areas)
- 7 Stained oak stairs with matching handrail and oak nosing in choice of stain with metal pickets
- 8 Luxurious imported ceramic tile flooring in Kitchen, Breakfast Room, Powder Room, Foyer and Laundry Room
- 9 Choice of location for 20 - 4" LED potlights on main or lower level
- 10 Direct vent gas fireplace with painted wood mantle and marble surround
- 11 Ceramic Kitchen backsplash
- 12 5 1/4" baseboard and 3" integrated backband casing
- 13 Stainless steel range hood
- 14 Unique Powder Room pedestal sinks
- 15 Dual flush toilet
- 16 Central Vac rough-in
- 17 Two Garage door openers

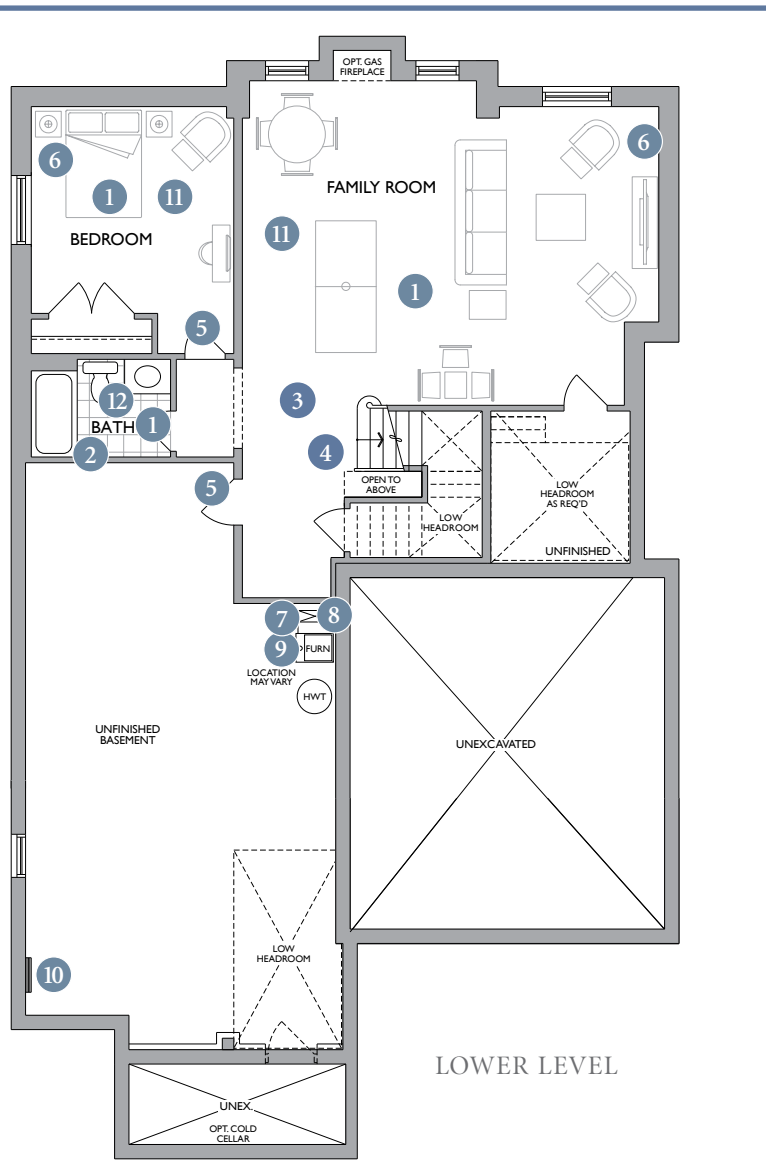
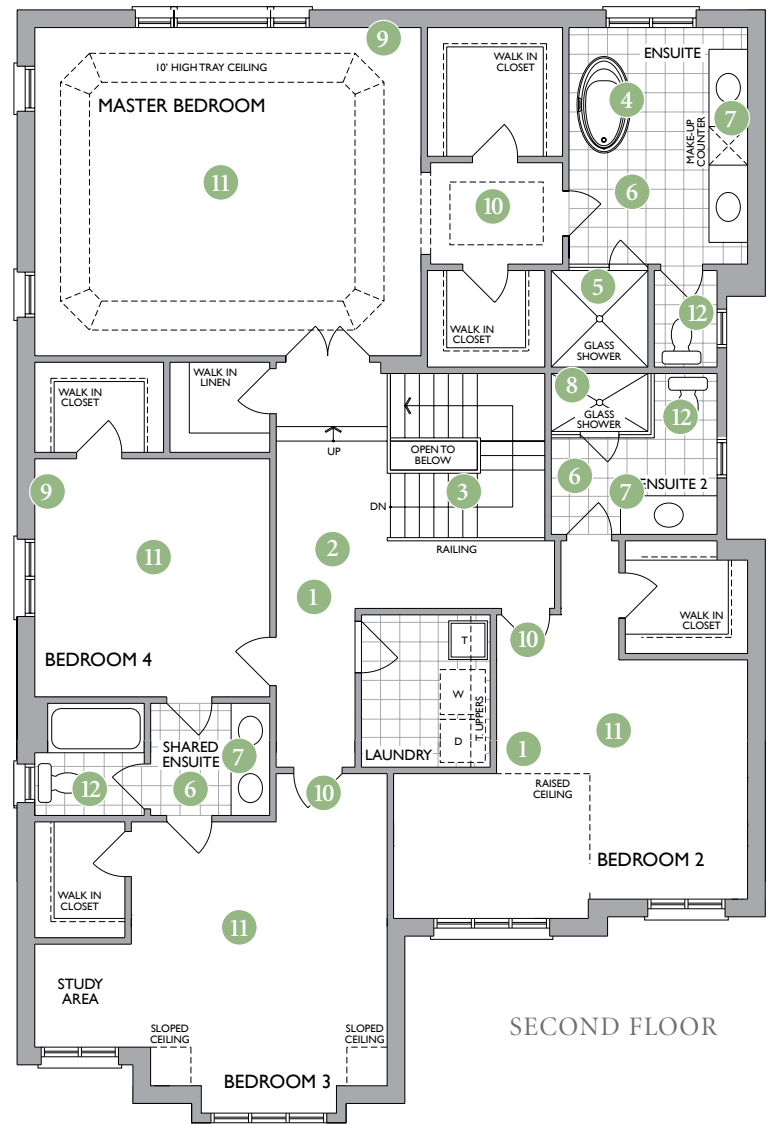


A REFLECTION OF YOUR IMPECCABLE TASTE AND STYLE



SECOND FLOOR FEATURES

- 1 9' ceilings (as per plan)
- 2 5" Handscraped "Vintage" engineered Oak flooring in upper hall
- 3 Stained oak stairs with matching handrails and oak nosing in a choice of stain with metal pickets to main floor
- 4 Luxurious freestanding soaker tub
- 5 Master Ensuite features, frameless glass shower enclosures with door
- 6 Luxurious imported ceramic tile flooring in all ensuites
- 7 All Ensuites feature upgraded vanity cabinetry
- 8 Luxurious chrome framed glass shower with door in secondary ensuite
- 9 5 1/4" baseboard and 3" intergrated backbend casing
- 10 8' "Safe and Sound" interior doors
- 11 Luxury 40 oz broadloom in all bedrooms
- 12 Dual flush toilets



LOWER LEVEL HIGHLIGHTS

- 1 Fully Finished lower level
- 2 3 piece bathroom and much, much more
- 3 9' ceilings*
- 4 Stained oak stairs with matching handrails and metal pickets to main floor
- 5 6' 8" "Safe and Sound" interior doors
- 6 5 1/4" baseboard and 3" integrated backbend casing
- 7 96% High Efficiency furnace with ECM motor
- 8 Heat Recovery Ventilator (HRV)
- 9 Humidifier
- 10 100 amp Electrical Service
- 11 Luxurious 40 oz. broadloom
- 12 Dual flush toilet

(*Except where beams and heating equipment are required)